

ENGLEWOOD NATURE TRAIL

MEETING #2

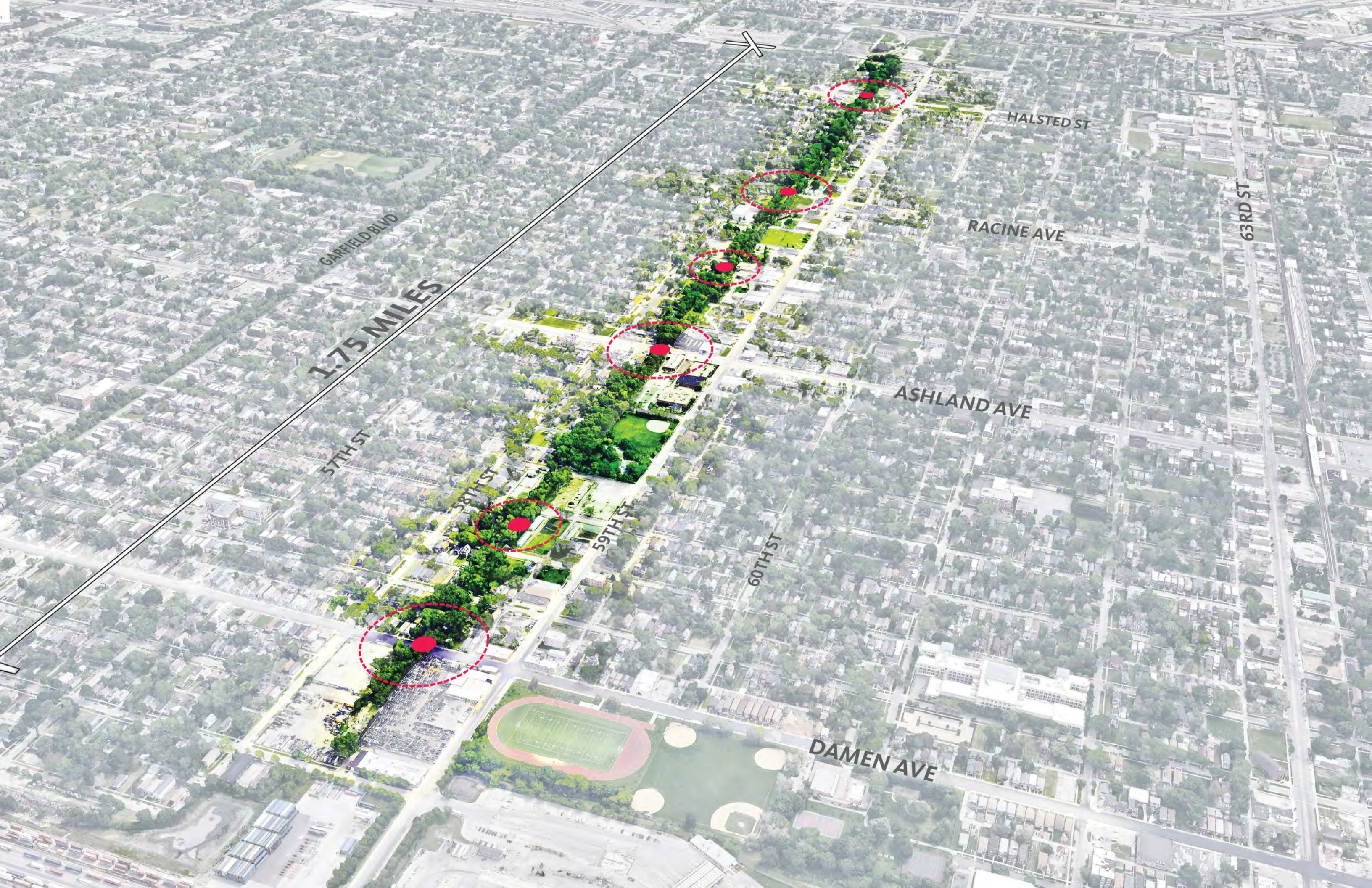
JULY 07



LAND AND ANCESTOR ACKNOWLEDGEMENT

TONIGHT

- 6:00 Welcome Remarks
- 6:15 Intro: Where we are.
- 6:30 Act I. Share your memories!
- 7:00 Act II. Where would you start?
- 7:30 Act III. How would you do it?
- 8:00 Surprise Celebration



1.75 MILES

GARFIELD BLVD

57TH ST

58TH ST

59TH ST

60TH ST

DAMEN AVE

ASHLAND AVE

RACINE AVE

HALSTED ST

63RD ST

INTRODUCTION

ENGLEWOOD NATURE TRAIL TIMELINE



RECURRING THEMES



ANTI-DISPLACEMENT

Stabilize existing housing and create affordable housing to increase homeownership.



ENVIRONMENTAL QUALITY

Remediate vacant and contaminated sites into nature hubs for Englewood residents.



COMMUNITY STEWARDSHIP

Create a model for community stewardship of the trail and its adjacent vacant lots; Stewardship Alliance comprised of community stakeholders.



WORKFORCE DEVELOPMENT

Leverage city-owned land to support continued development of local owned businesses, entrepreneurs and neighborhood services.



ECONOMIC DEVELOPMENT

Provide a neighborhood asset that will support future equitable commercial and mixed-income residential development.



PHOTOS BY GROW GREATER ENGLEWOOD AND THE GROWING HOME







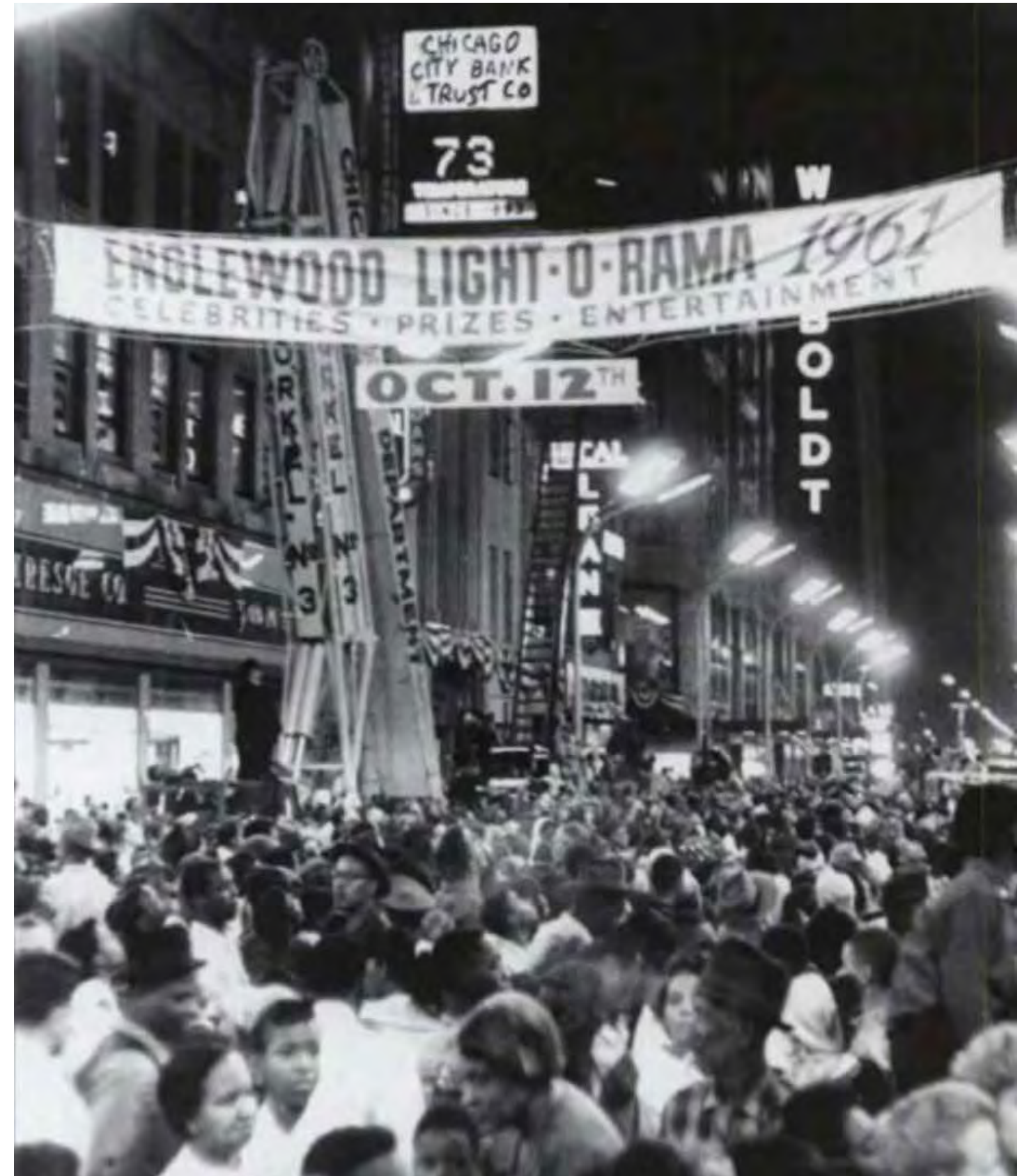
ENGLEWOOD WORKS



PHOTOS BY COLIN BOYLE FOR BLOCK CLUB, CIVIC PROJECTS ARCHITECTURE, PATRICK CAVAN BROWN FOR POLITICO MAGAZINE, AND GROW GREATER ENGLEWOOD

ACT I

SHARE YOUR MEMORIES!



PHOTOS BY UNKNOWN SOURCES, 63rd & HALSTED, 1950 [TOP], THE GREEN DOOR CLUB 1959 AND TASTES ENTERTAINMENT, 1980S [BOTTOM]

LIVING TRACKS STUDY ENGLEWOOD, PHOTO PULLMAN BANK AND TRUST

SIX MILES TO LASALLE STATION—
IN THE HEART OF CHICAGO

ROCK ISLAND
ENGLEWOOD
UNION STATION
NEW YORK CENTRAL
PENNSYLVANIA LINES
NIGHT FARE

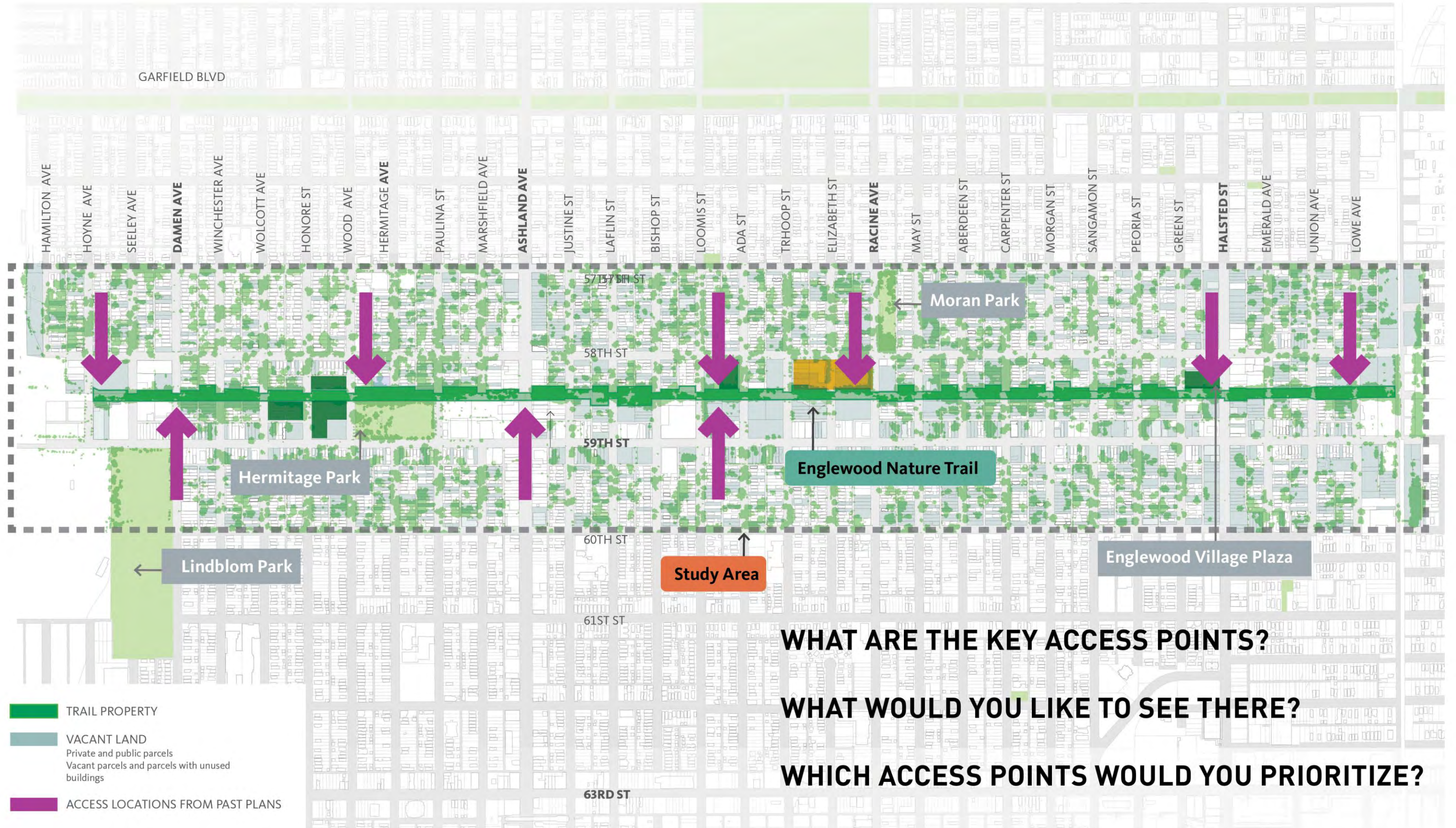
Rock Island Lines trains make convenient eastern connections without transfer at Englewood Union Station (63rd St.) Chicago as well as La Salle St. Station—most centrally located railroad station in the Chicago down town district and on the elevated loop.

SHARE YOUR MEMORIES!

ACT II

WHERE WOULD YOU START?

WHERE DO YOU WANT TO GET UP ON THE TRAIL?

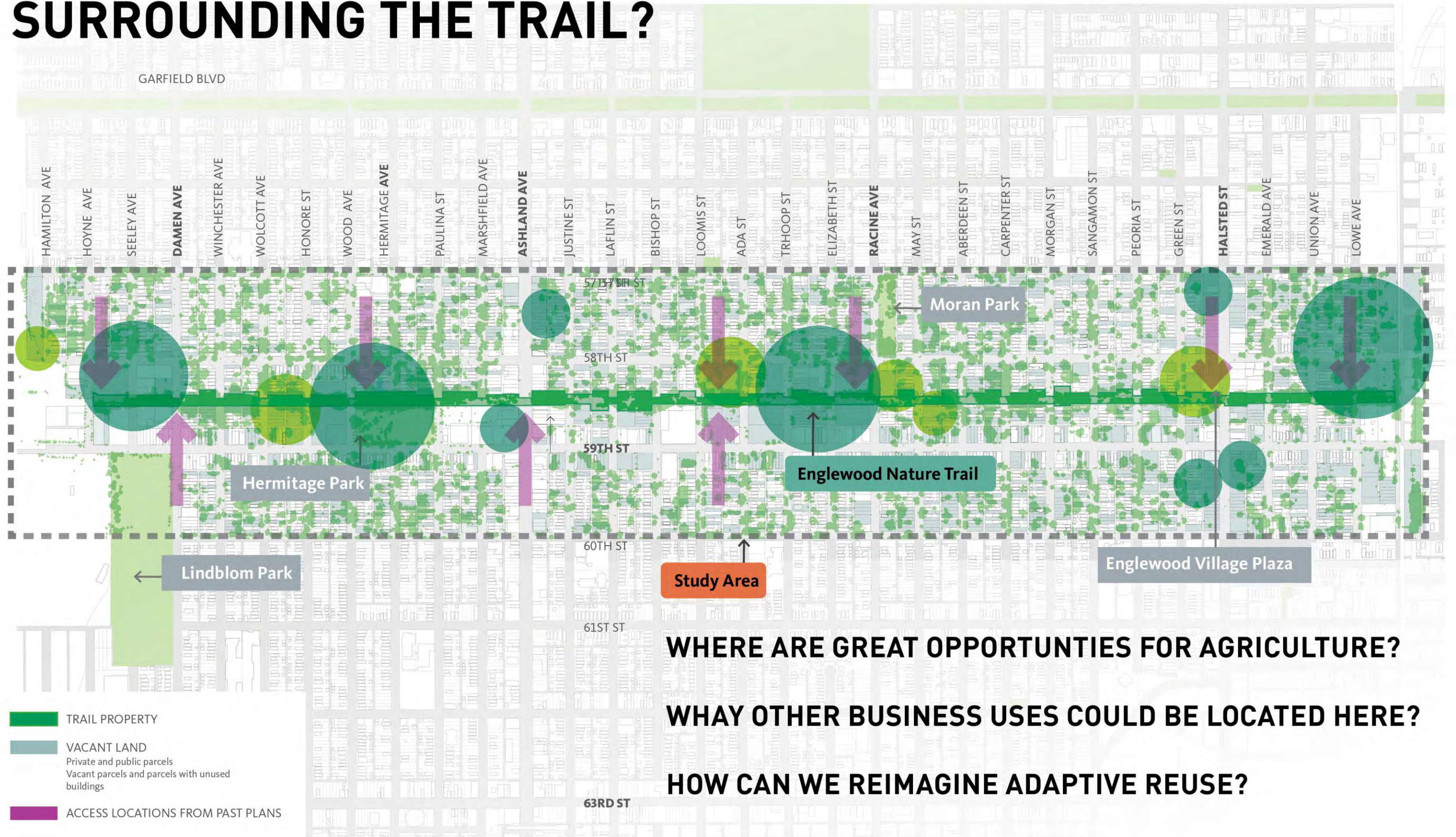


WHAT ARE THE KEY ACCESS POINTS?

WHAT WOULD YOU LIKE TO SEE THERE?

WHICH ACCESS POINTS WOULD YOU PRIORITIZE?

WHAT ARE THE OPPORTUNITIES SURROUNDING THE TRAIL?

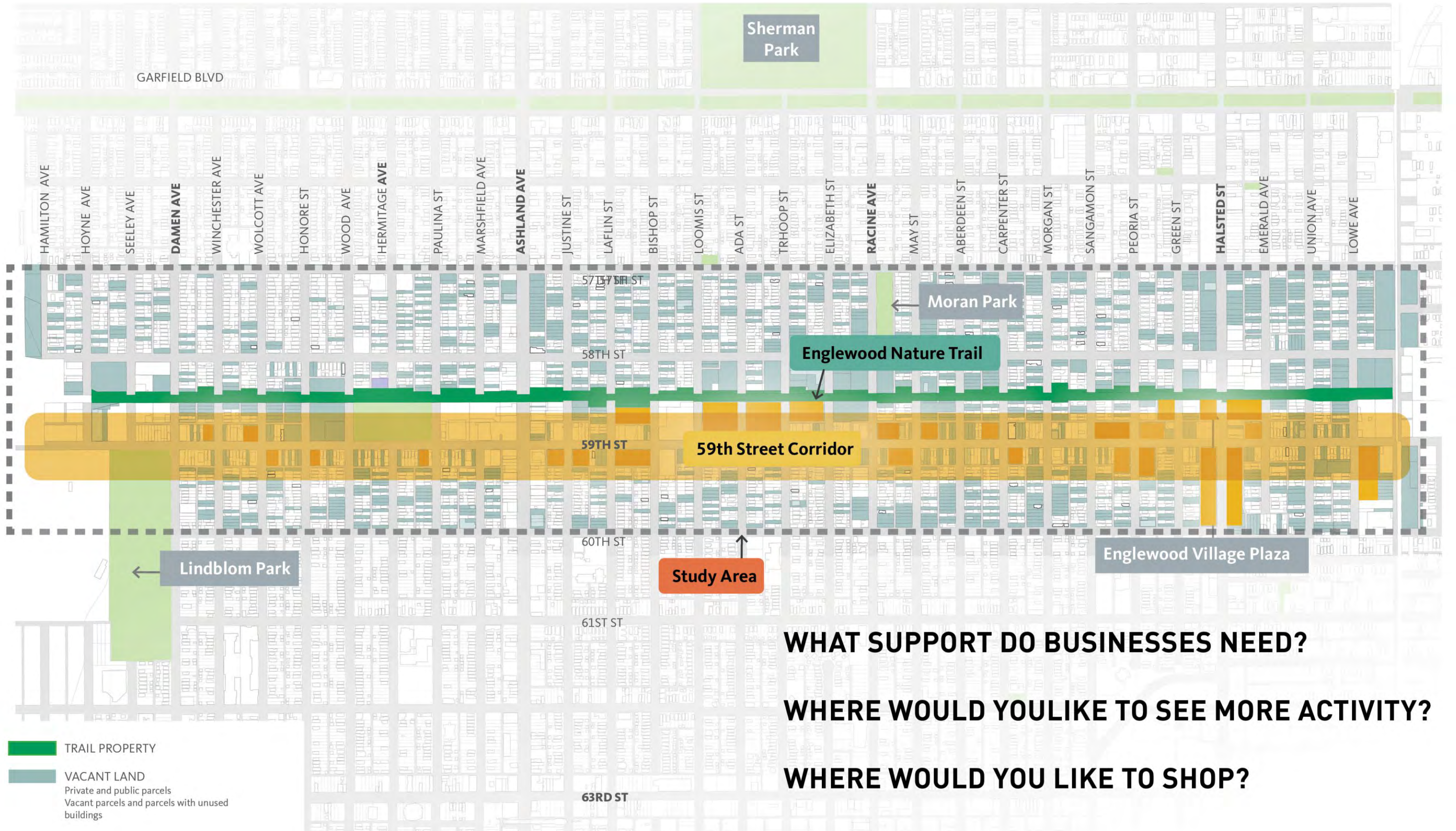


WHERE ARE GREAT OPPORTUNITIES FOR AGRICULTURE?

WHAY OTHER BUSINESS USES COULD BE LOCATED HERE?

HOW CAN WE REIMAGINE ADAPTIVE REUSE?

59TH STREET OPPORTUNITIES



WHAT SUPPORT DO BUSINESSES NEED?

WHERE WOULD YOU LIKE TO SEE MORE ACTIVITY?

WHERE WOULD YOU LIKE TO SHOP?



SPACES FOR AGRICULTURE

PHOTO BY BWEZA ITAAGI



ACCESS AND PUBLIC SPACES



Englewood

R O O D

MADE IN Englewood

CULTURAL SPACES

NEW DEVELOPMENT LOCATIONS



OPPORTUNITIES FOR NEW BUSINESSES



CREATIVE REUSE

HOYNE TO HERMITAGE



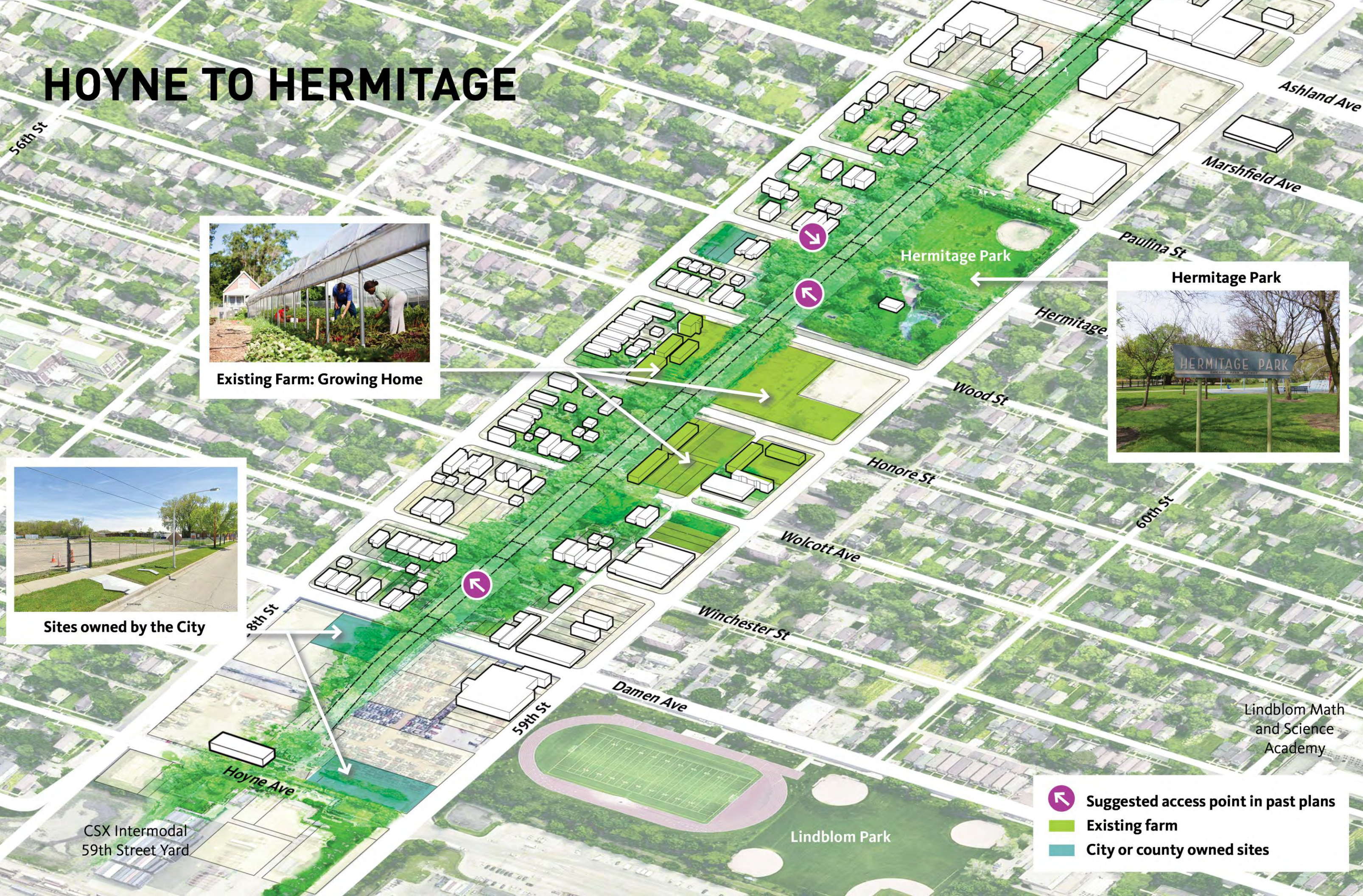
Existing Farm: Growing Home



Sites owned by the City



Hermitage Park



-  Suggested access point in past plans
-  Existing farm
-  City or county owned sites

CSX Intermodal
59th Street Yard

Lindblom Math
and Science
Academy

Lindblom Park

HERMITAGE TO ADA

Existing Farm: Sistas in the Village



Sites owned by the City

Sites owned by Cook County

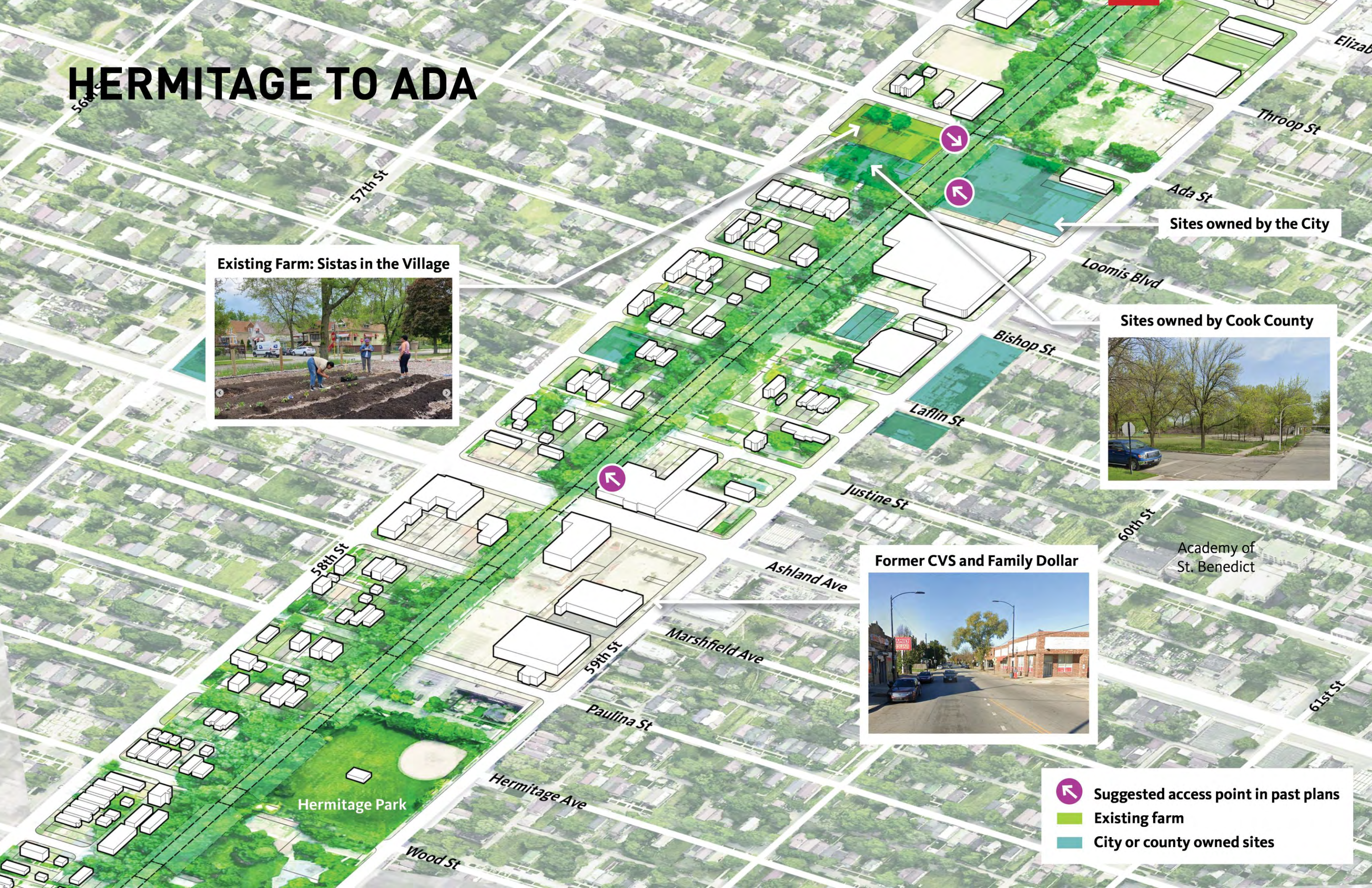


Former CVS and Family Dollar



Academy of St. Benedict

-  Suggested access point in past plans
-  Existing farm
-  City or county owned sites



ADA TO SANGAMON

Existing Farm: Sistas in the Village



Existing Farm: DuSable City Ancestral Winery and Vineyards

Former Leons BBQ Future Restaurant - RAGE

Former Bontemps Elementary

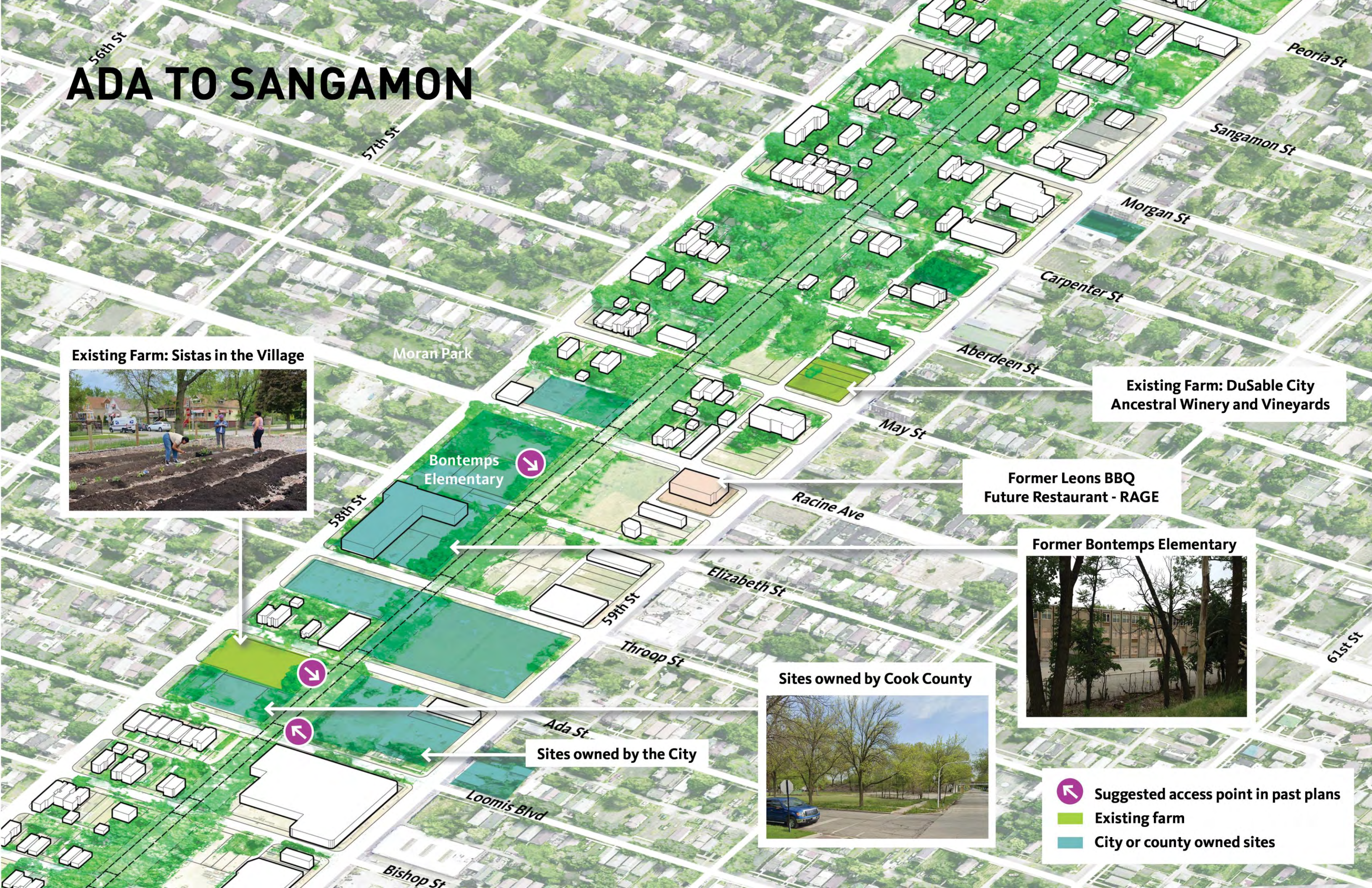


Sites owned by Cook County



Sites owned by the City

 Suggested access point in past plans
 Existing farm
 City or county owned sites



SANGAMON TO LOWE

Norfolk Southern
Rail Yard

Future farming site

Wallace Ave

Lowe Ave

Union Ave

Emerald Ave

Halsted St

Sites owned by the City

Green St

Sites owned by the City

Nicholson STEM
Academy

-  Suggested access point in past plans
-  Existing farm
-  City or county owned sites

Englewood Village Farms and Plaza



57th St

58th St

59th St

Sangamon St

Morgan St

61st St

WHERE WOULD YOU START?

WHAT ARE THE KEY ACCESS POINTS?

WHAT WOULD YOU LIKE TO SEE THERE?

WHICH ACCESS POINTS WOULD YOU PRIORITIZE?

WHERE ARE GREAT OPPORTUNITIES FOR AGRICULTURE?

COULD OTHER BUSINESS USES BE LOCATED HERE?

HOW CAN WE REIMAGINE ADAPTIVE REUSE?

ACT III

HOW WOULD YOU DO IT?



LIVING ST

Play Ployst Trail

Shannon
Hillside
Walk

Public
School
Franklin

Public
School
Franklin

PUBLIC ART

PLAY

ACCESS

BIOREMEDIATION

FARMING

GARDENS

**INTERIOR
PROGRAM**

GATHERING

YOUR IDEA

JOIN OUR NEXT EVENT!

FUTURE MEETINGS
WILL BE FIRST
THURSDAYS THIS
SUMMER

MEETING **#3**

AUG 4, 2022
6PM

COMMUNITY WEALTH
BUILDING STRATEGIES

MEETING **#4**

SEPT 1, 2022
6PM

DESIGN
CHARENTE

STAY CONNECTED

**CONNECT
WITH GROW
GREATER
ENGLEWOOD**

www.growgreater.org

connect@growgreater.org

**CONNECT
WITH THE
CITY OF
CHICAGO**

[https://www.chicago.gov/
city/en/sites/
englewood-trail](https://www.chicago.gov/city/en/sites/englewood-trail)

**ATTEND FUTURE
MEETINGS THIS
SUMMER**

**FIRST
THURSDAYS!**